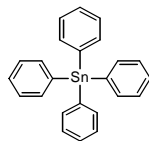
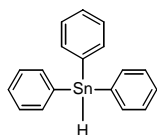


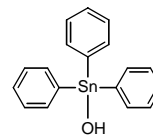
**Organotin Reagent Structures:**



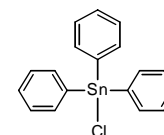
TPT  
CAS: 595-90-4  
MF:  $C_{24}H_{20}Sn$   
MW: 426.95



TPTH  
CAS: 892-20-6  
MF:  $C_{18}H_{16}Sn$   
MW: 350.89



TPTOH  
CAS: 76-87-9  
MF:  $C_{18}H_{16}SnO$   
MW: 366.89



TPTCl  
CAS: 639-58-7  
MF:  $C_{18}H_{15}SnCl$   
MW: 385.34