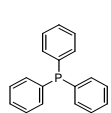
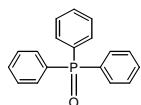


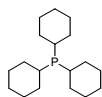
Monophosphine structures:



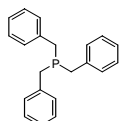
TPP
CAS: 603-35-0
MF: C₁₈H₁₅P
MW: 262.20



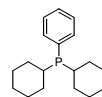
TPPO
CAS: 791-28-6
MF: C₁₈H₁₅PO
MW: 278.20



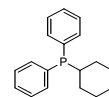
TCHP
CAS: 2622-14-2
MF: C₁₈H₃₃P
MW: 280.20



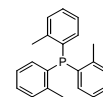
TBzP
CAS: 7650-89-7
MF: C₂₁H₂₁P
MW: 304.23



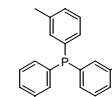
DCHPP
CAS: 6476-37-5
MF: C₁₈H₂₇P
MW: 274.20



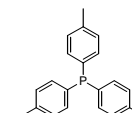
CHDPP
CAS: 6372-42-5
MF: C₁₈H₂₁P
MW: 268.20



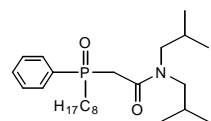
T2TP
CAS: 6163-58-2
MF: C₂₇H₂₁P
MW: 376.30



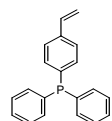
T3TP
CAS: 6224-63-1
MF: C₂₇H₂₁P
MW: 376.20



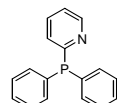
T4TP
CAS: 1038-95-5
MF: C₂₇H₂₁P
MW: 376.20



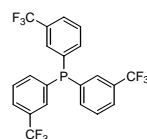
CMPO
CAS: 83242-95-9
MF: C₂₄H₄₂PNO₂
MW: 407.26



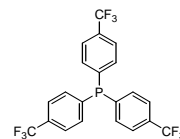
4SDPP
CAS: 40538-11-2
MF: C₂₀H₁₇P
MW: 288.22



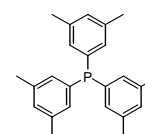
2PyrDPP
CAS: 37943-90-1
MF: C₁₇H₁₄P
MW: 264.19



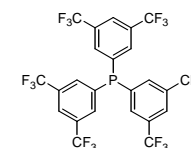
T3TFMPP
CAS: 25688-46-4
MF: C₂₁H₁₂F₉P
MW: 466.23



T4TFMPP
CAS: 13406-29-6
MF: C₂₁H₁₂F₉P
MW: 466.23



3,5-TXP
CAS: 69227-47-0
MF: C₂₄H₂₇P
MW: 364.26



3,5-TBTFMPP
CAS: 175136-62-6
MF: C₂₄H₉F₁₈P
MW: 670.26