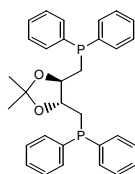
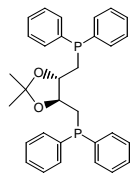


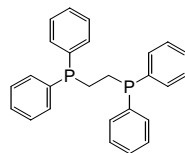
Bisphosphine structures:



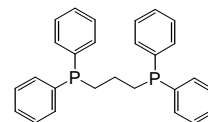
(-)-DIOP
CAS: 32305-98-9
MF: $C_{31}H_{32}P_2O_2$
MW: 498.34



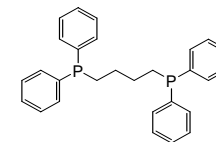
(+)-DIOP
CAS: 37002-48-5
MF: $C_{31}H_{32}P_2O_2$
MW: 498.34



1,2-DPPE
CAS: 1663-45-2
MF: $C_{26}H_{24}P_2$
MW: 398.29



1,3-DPPP
CAS: 6737-42-4
MF: $C_{27}H_{26}P_2$
MW: 412.30



1,4-DPPB
CAS: 7688-25-7
MF: $C_{28}H_{28}P_2$
MW: 426.31